



Survey Summary Report: Numbers and Types of Responses, SLPs

Suggested Citation:

American Speech-Language-Hearing Association. (2018). *2018 Schools survey. Survey summary report: Numbers and types of responses, SLPs*. Available from www.asha.org.

Contents

Sampling and Response Rates	1
ASHA Services and Programs: Q 1	2
Workforce: Qs 2–4	5
Employment and Earnings: Qs 5–13.....	10
Performance Evaluation: Q 14	21
Caseload: Qs 15–21.....	22
Birth Through Five: Q 22	35
Supervision: Qs 23–25	38
Ethics: Q 26.....	41
Journals: Q 27	44
IDEA: Q 28	48
Student Loans: Qs 29–32.....	57
Demographics: Qs 33–38.....	61
Appendix	68

Sampling and Response Rates

Probability (nonreplacement) sampling using a stratified systematic technique was used to select a sample of 4,500 ASHA-certified speech-language pathologists with schools as their primary employment facility for the *2018 Schools Survey*. The sample was stratified by state, and data have been weighted to reflect their proportion by state within the Association. Small groups, such as speech-language pathologists who work in Wyoming and Idaho, were over sampled so that sufficient numbers from these groups could be included in the sample.

An additional 500 ASHA-certified educational audiologists were also randomly selected to participate. Their results are in a separate report. This report is limited to responses from individuals with a Certificate of Clinical Competence in Speech-Language Pathology (CCC-SLP) only.



An overall response rate of 48.0% was obtained for SLPs and audiologists combined (2,374 completed surveys from a net sample of 4,946 eligibles). The response rate for SLPs was **48.8%** (2,170 completed surveys from a net sample of 4,450 eligible respondents). These percentages are unweighted.

Data were weighted for all tables in the report. The “All Facility Types” column throughout the report reflects results for respondents from the six facility types as well as from the 24 respondents who were employed in students’ homes and 20 respondents who were employed in “other” types of facilities, and respondents who did not answer the question about facility type. Therefore, the “All Facility Types” column may not be the sum of the *ns* in the other six columns. Data are not presented for table cells with fewer than 25 respondents, and administrative offices were excluded for questions where responses were limited to clinical service providers.

A description of statistical terms used in the report can be found in the Appendix at the end of the report.

ASHA Services and Programs

1. In your opinion, what kind of job is the Association doing in serving its school-based members? (Percentages) Analyses limited to respondents who met the following criterion: ❖ CCC-SLP							
Response	Facility Type						
	All Facility Types (n ≥ 2,106)	Special Day/ Residential (n ≥ 80)	Preschool (n ≥ 269)	Elementary (n ≥ 1,163)	Secondary (n ≥ 268)	Admin. Office (n ≥ 48)	Combina- tion (n ≥ 157)
Overall							
Poor	3.2	1.2	1.9	3.1	4.2	0.0	4.5
Fair	21.0	15.9	22.3	22.2	20.0	16.3	22.3
Good	55.0	57.3	51.3	55.2	57.7	59.2	55.4
Excellent	12.2	13.4	12.6	11.8	10.0	18.4	14.0
Don't know, NA	8.6	12.2	11.9	7.7	8.1	6.1	3.8
		Statistical significance: $\chi^2(20) = 23.3, p = .274$ <u>Conclusion</u> : There is not enough evidence from the data to say that the responses vary by facility type.					
With Advocacy							
Poor	8.3	3.7	7.4	9.0	7.5	0.0	10.2
Fair	23.0	22.2	20.4	23.7	24.6	30.0	21.7
Good	43.1	44.4	43.1	42.0	46.6	46.0	44.6
Excellent	10.4	9.9	10.4	10.3	7.8	18.0	14.0
Don't know, NA	15.1	19.8	18.6	15.0	13.4	6.0	9.6
		Statistical significance: $\chi^2(20) = 28.2, p = .105$ <u>Conclusion</u> : There is not enough evidence from the data to say that the responses vary by facility type.					
(Question 1 continues on next page.)							

1. (cont'd) In your opinion, what kind of job is the Association doing in serving its school-based members? (Percentages)

Analyses limited to respondents who met the following criterion:

❖ CCC-SLP

Response	Facility Type						
	All Facility Types (n ≥ 2,106)	Special Day/ Residential (n ≥ 80)	Preschool (n ≥ 269)	Elementary (n ≥ 1,163)	Secondary (n ≥ 268)	Admin. Office (n ≥ 48)	Combina- tion (n ≥ 157)
With Continuing Education							
Poor	2.2	2.5	1.5	2.2	4.0	0.0	1.3
Fair	15.9	12.5	15.5	17.0	16.9	12.5	10.8
Good	51.4	48.8	48.0	52.2	49.6	52.1	57.0
Excellent	24.1	26.3	26.6	22.3	25.0	35.4	29.1
Don't know, NA	6.4	10.0	8.5	6.2	4.4	0.0	1.9
	Statistical significance: $\chi^2(20) = 33.2$, $p = .032$, Cramer's $V = .064$ <u>Conclusion:</u> There is adequate evidence from the data to say that the responses vary by facility type.						
With Evidence-Based Resources							
Poor	1.9	1.2	0.7	1.7	4.9	0.0	1.9
Fair	15.7	11.1	14.8	17.2	14.2	16.7	10.8
Good	50.9	45.7	43.9	52.7	53.7	39.6	52.2
Excellent	23.6	29.6	28.8	21.2	20.5	43.8	31.8
Don't know, NA	8.0	12.3	11.8	7.1	6.7	0.0	3.2
	Statistical significance: $\chi^2(20) = 64.2$, $p = .000$, Cramer's $V = .090$ <u>Conclusion:</u> There is adequate evidence from the data to say that the responses vary by facility type.						
(Question 1 continues on next page.)							

1. (cont'd) In your opinion, what kind of job is the Association doing in serving its school-based members? (Percentages)

Analyses limited to respondents who met the following criterion:

❖ CCC-SLP

Response	Facility Type						
	All Facility Types (n ≥ 2,106)	Special Day/ Residential (n ≥ 80)	Preschool (n ≥ 269)	Elementary (n ≥ 1,163)	Secondary (n ≥ 268)	Admin. Office (n ≥ 48)	Combina- tion (n ≥ 157)
With Questions About School-Based Practice							
Poor	2.8	1.3	1.5	3.4	3.0	0.0	2.5
Fair	20.3	13.8	20.4	20.8	21.9	26.5	20.1
Good	49.8	46.3	47.8	50.5	53.3	42.9	49.1
Excellent	14.1	20.0	13.7	13.9	10.4	30.6	15.1
Don't know, NA	13.0	18.8	16.7	11.5	11.5	0.0	13.2
		Statistical significance: $\chi^2(20) = 38.0$, $p = .009$, Cramer's $V = .069$ <u>Conclusion</u> : There is adequate evidence from the data to say that the responses vary by facility type.					



Workforce

2. CCC-A ONLY. Based on your own observations and experiences, rate the current job market for audiology clinical service providers in your type of employment facility and in your geographic area. (Percentages)

Response	Facility Type							
	All Facility Types	Special Day/ Residential	Preschool	Elementary	Secondary	Student's Home	Admin. Office	Combina-tion
More job openings than job seekers	See Survey Summary Report: <i>Numbers and Types of Responses, Educational Audiologists</i>							
Job openings and job seekers in balance								
Fewer job openings than job seekers								

3. CCC-SLP ONLY. Based on your own observations and experiences, rate the current job market for speech-language pathology clinical service providers in your type of employment facility and in your geographic area. (Percentages)
Analyses limited to respondents who met the following criterion:
❖ CCC-SLP

Response	Facility Type						
	All Facility Types (n = 2,110)	Special Day/ Residential (n = 84)	Preschool (n = 270)	Elementary (n = 1,161)	Secondary (n = 277)	Admin. Office (n = 47)	Combina-tion (n = 159)
More job openings than job seekers	54.3	39.3	54.8	55.3	44.4	66.0	62.3
Job openings and job seekers in balance	30.3	36.9	30.4	31.4	31.4	21.3	24.5
Fewer job openings than job seekers	15.4	23.8	14.8	13.4	24.2	12.8	13.2
		Statistical significance: $\chi^2(10) = 38.0$, $p = .000$, Cramer's $V = .097$ <u>Conclusion</u> : There is adequate evidence from the data to say that the responses vary by facility type.					

ASHA 2018 SLP Schools Survey: Survey Summary Report

4. What are your greatest challenges as a school-based professional? *Select all that apply.* (Percentages) Responses were in alphabetical order on survey instrument.

Analyses limited to respondents who met the following criterion:

❖ CCC-SLP

Challenge	Facility Type						
	All Facility Types (n = 2,170)	Special Day/ Residential (n ≥ 83)	Preschool (n ≥ 279)	Elementary (n ≥ 1,195)	Secondary (n ≥ 278)	Admin. Office (n ≥ 49)	Combina- tion (n ≥ 163)
Large amount of paperwork	79.2	67.9	78.9	81.9	71.0	79.6	78.0
		Statistical significance: $\chi^2(5) = 23.5$, $p = .000$, Cramer's $V = .107$ <u>Conclusion</u> : There is adequate evidence from the data to say that the responses vary by facility type.					
High workload/caseload size	71.2	56.0	73.2	73.6	62.4	75.5	71.8
		Statistical significance: $\chi^2(5) = 24.5$, $p = .000$, Cramer's $V = .109$ <u>Conclusion</u> : There is adequate evidence from the data to say that the responses vary by facility type.					
Limited time for collaboration	53.5	36.1	43.6	55.9	51.3	62.0	62.0
		Statistical significance: $\chi^2(5) = 30.5$, $p = .000$, Cramer's $V = .122$ <u>Conclusion</u> : There is adequate evidence from the data to say that the responses vary by facility type.					
Budget constraints	46.9	26.5	50.9	45.7	46.2	46.0	53.0
		Statistical significance: $\chi^2(5) = 18.7$, $p = .002$, Cramer's $V = .095$ <u>Conclusion</u> : There is adequate evidence from the data to say that the responses vary by facility type.					
Incorporating optimal service delivery models	43.6	34.5	42.9	45.5	45.5	60.0	36.6
		Statistical significance: $\chi^2(5) = 13.3$, $p = .021$, Cramer's $V = .080$ <u>Conclusion</u> : There is adequate evidence from the data to say that the responses vary by facility type.					
(Question 4 continues on next page.)							

ASHA 2018 SLP Schools Survey: Survey Summary Report

4. (cont'd) What are your greatest challenges as a school-based professional? *Select all that apply.* (Percentages) Responses were in alphabetical order on survey instrument.

Analyses limited to respondents who met the following criterion:

❖ CCC-SLP

Challenge	Facility Type						
	All Facility Types (n = 2,170)	Special Day/ Residential (n ≥ 83)	Preschool (n ≥ 279)	Elementary (n ≥ 1,195)	Secondary (n ≥ 278)	Admin. Office (n ≥ 49)	Combina- tion (n ≥ 163)
Limited understanding of my role by others	37.8	36.9	25.4	40.8	39.4	30.6	36.2
	Statistical significance: $\chi^2(5) = 24.7$, $p = .000$, Cramer's $V = .110$ <u>Conclusion:</u> There is adequate evidence from the data to say that the responses vary by facility type.						
Low salary	36.1	35.7	36.1	36.7	33.0	44.9	39.0
	Statistical significance: $\chi^2(5) = 3.5$, $p = .623$ <u>Conclusion:</u> There is not enough evidence from the data to say that the responses vary by facility type.						
Out-of-pocket professional expenses	34.7	25.3	37.1	35.3	29.0	22.4	41.1
	Statistical significance: $\chi^2(5) = 14.3$, $p = .014$, Cramer's $V = .084$ <u>Conclusion:</u> There is adequate evidence from the data to say that the responses vary by facility type.						
Medicaid billing	34.0	26.2	32.1	36.5	27.6	38.8	30.7
	Statistical significance: $\chi^2(5) = 12.3$, $p = .031$, Cramer's $V = .078$ <u>Conclusion:</u> There is adequate evidence from the data to say that the responses vary by facility type.						
Inadequate work space and facilities	33.3	41.7	42.9	28.6	29.5	42.9	47.2
	Statistical significance: $\chi^2(5) = 44.3$, $p = .000$, Cramer's $V = .147$ <u>Conclusion:</u> There is adequate evidence from the data to say that the responses vary by facility type.						
(Question 4 continues on next page.)							

4. (cont'd) What are your greatest challenges as a school-based professional? *Select all that apply.* (Percentages) Responses were in alphabetical order on survey instrument.

Analyses limited to respondents who met the following criterion:

❖ CCC-SLP

Challenge	Facility Type						
	All Facility Types (n = 2,170)	Special Day/ Residential (n ≥ 83)	Preschool (n ≥ 279)	Elementary (n ≥ 1,195)	Secondary (n ≥ 278)	Admin. Office (n ≥ 49)	Combina- tion (n ≥ 163)
Limited parental involvement and support	30.6	30.1	26.8	32.7	22.6	22.4	35.6
	Statistical significance: $\chi^2(5) = 16.4$, $p = .006$, Cramer's $V = .089$ <u>Conclusion:</u> There is adequate evidence from the data to say that the responses vary by facility type.						
Personnel shortage	23.1	16.9	26.4	21.7	14.3	49.0	33.5
	Statistical significance: $\chi^2(5) = 45.9$, $p = .000$, Cramer's $V = .150$ <u>Conclusion:</u> There is adequate evidence from the data to say that the responses vary by facility type.						
Limited support from the administration	22.9	24.1	26.4	22.0	18.6	12.2	29.3
	Statistical significance: $\chi^2(5) = 12.4$, $p = .030$, Cramer's $V = .078$ <u>Conclusion:</u> There is adequate evidence from the data to say that the responses vary by facility type.						
Lack of training to work with specific disorders or special populations	20.5	22.9	20.7	20.7	22.6	12.2	19.6
	Statistical significance: $\chi^2(5) = 3.1$, $p = .687$ <u>Conclusion:</u> There is not enough evidence from the data to say that the responses vary by facility type.						
(Question 4 continues on next page.)							

4. (cont'd) What are your greatest challenges as a school-based professional? *Select all that apply.* (Percentages) Responses were in alphabetical order on survey instrument.

Analyses limited to respondents who met the following criterion:

❖ CCC-SLP

Challenge	Facility Type						
	All Facility Types (n = 2,170)	Special Day/ Residential (n ≥ 83)	Preschool (n ≥ 279)	Elementary (n ≥ 1,195)	Secondary (n ≥ 278)	Admin. Office (n ≥ 49)	Combina- tion (n ≥ 163)
Ethical challenges	14.1	14.3	16.1	13.5	12.2	12.2	14.7
	Statistical significance: $\chi^2(5) = 2.1, p = .832$ <u>Conclusion:</u> There is not enough evidence from the data to say that the responses vary by facility type.						
Legal challenges (e.g., due process)	13.1	11.9	10.4	12.8	15.1	22.4	15.2
	Statistical significance: $\chi^2(5) = 7.4, p = .194$ <u>Conclusion:</u> There is not enough evidence from the data to say that the responses vary by facility type.						
Travel/distance between schools	7.2	4.8	10.0	6.9	5.4	8.2	7.9
	Statistical significance: $\chi^2(5) = 5.8, p = .330$ <u>Conclusion:</u> There is not enough evidence from the data to say that the responses vary by facility type.						



Employment and Earnings

5. Which one of the following categories best describes your employment status? (Percentages)

Analyses limited to respondents who met the following criterion:

❖ CCC-SLP

Status	Facility Type						
	All Facility Types (n = 2,109)	Special Day/ Residential (n = 84)	Preschool (n = 279)	Elementary (n = 1,196)	Secondary (n = 279)	Admin. Office (n = 49)	Combina- tion (n = 164)
Employed full time	84.4	82.1	76.3	86.6	86.7	83.7	83.5
Employed part time	15.6	17.9	23.7	13.4	13.3	16.3	16.5
Not currently employed (SKIP to Q. 27.)	Removed from analyses						
	Statistical significance: $\chi^2(5) = 20.0$, $p = .001$, Cramer's $V = .099$ <u>Conclusion:</u> There is adequate evidence from the data to say that the responses vary by facility type.						



6. Which one of the following best describes your principal employment situation? (Percentages)

Analyses limited to respondents who met the following criteria:

- ❖ CCC-SLP
- ❖ Employed full time or part time

Situation	Facility Type						
	All Facility Types (n = 2,099)	Special Day/ Residential (n = 82)	Preschool (n = 275)	Elementary (n = 1,192)	Secondary (n = 278)	Admin. Office (n = 49)	Combina- tion (n = 162)
Salaried employee, full time or part time	87.3	89.0	84.4	88.8	91.0	93.9	80.2
Contractor, full time or part time	12.7	11.0	15.6	11.2	9.0	6.1	19.8
	Statistical significance: $\chi^2(5) = 17.5$, $p = .004$, Cramer's $V = .093$ <u>Conclusion:</u> There is adequate evidence from the data to say that the responses vary by facility type.						



7. Although you may work in several types of facilities, select the one type of building that best describes where you work all or most of the time. *For individuals who work in private practice or early intervention, select the type of building in which you deliver most of your services. Only one response can be accepted.* (Percentages)

Analyses limited to respondents who met the following criteria:

- ❖ CCC-SLP
- ❖ Employed full time or part time

Facility	Percentages (n = 2,094)
Special day/residential school	4.0
Pre-elementary (preschool)	13.3
Elementary school	57.1
Secondary school (middle school, junior high, senior high)	13.3
Student's home	1.0
Administrative office	2.3
Combination from the above list	7.8
Other; specify:	1.0

ASHA 2018 SLP Schools Survey: Survey Summary Report

8. Although you may perform more than one job function, select the one position that best describes how you spend most of your time. *Only one response can be accepted.* (Percentages)

Analyses limited to respondents who met the following criteria:

- ❖ CCC-SLP
- ❖ Employed full time or part time

Function	Facility Type						
	All Facility Types (n = 2,093)	Special Day/ Residential (n = 83)	Preschool (n = 274)	Elementary (n = 1,196)	Secondary (n = 276)	Admin. Office (n = 47)	Combina- tion (n = 160)
Clinical service provider (includes all individuals providing any direct service)	89.0	84.3	88.3	94.4	94.2	4.3	68.8
Diagnostician	2.7	2.4	5.1	1.5	0.7	8.5	6.9
Special education teacher	2.0	0.0	1.1	2.0	2.5	0.0	5.0
Consultant	1.0	4.8	0.0	0.4	1.1	0.0	6.3
Administrator/ supervisor/director	4.4	8.4	5.1	1.3	1.1	83.0	7.5
Other; specify:	0.8	0.0	0.4	0.4	0.4	4.3	5.6
	Too many cells (50%) have an expected count of less than 5. <u>Conclusion:</u> Too little data are available in some facility categories to test whether responses vary by facility type.						

9. In your primary job, are you paid on an annual basis or an hourly basis? *Select one response only.* (Percentages)

Analyses limited to respondents who met the following criteria:

- ❖ CCC-SLP
- ❖ Employed full time or part time

Basis	Facility Type						
	All Facility Types (n = 2,104)	Special Day/ Residential (n = 83)	Preschool (n = 278)	Elementary (n = 1,195)	Secondary (n = 279)	Admin. Office (n = 49)	Combina- tion (n = 160)
Annual salary	86.6	81.9	82.0	89.0	89.2	93.9	81.9
Hourly rate (SKIP to Q. 12.)	13.4	18.1	18.0	11.0	10.8	6.1	18.1
		Statistical significance: $\chi^2(5) = 19.3$, $p = .002$, Cramer's $V = .097$ <u>Conclusion:</u> There is adequate evidence from the data to say that the responses vary by facility type.					



ASHA 2018 SLP Schools Survey: Survey Summary Report

10. What is your gross annual income for your primary job, before all deductions?

Analyses limited to respondents who met the following criteria:

- ❖ CCC-SLP
- ❖ Employed full time
- ❖ Annual salary of at least \$1

Response	Facility Type						
	All Facility Types	Special Day/ Residential	Preschool	Elementary	Secondary	Admin. Office	Combination
Worked 9–10 months (academic year)							
	<i>n</i> = 1,411	<i>n</i> = 35	<i>n</i> = 147	<i>n</i> = 883	<i>n</i> = 211	<i>n</i> = 16	<i>n</i> = 99
25th percentile	\$53,000	\$56,366	\$51,717	\$52,500	\$55,000	<i>(n</i> < 25)	\$54,558
50th percentile (Median)	\$63,338	\$66,201	\$62,000	\$62,715	\$68,000		\$64,495
75th percentile	\$78,000	\$84,231	\$74,794	\$76,000	\$84,087		\$77,984
Mean	\$66,440	\$74,784	\$64,238	\$65,549	\$70,293		\$66,062
Standard deviation	\$17,694	\$26,397	\$17,707	\$16,905	\$18,976		\$15,407
Mode	\$70,000	\$52,000	\$52,000	\$70,000	\$70,000		\$60,000
		Statistical significance: $F(5, 1384) = 4.8, p = .000$ <u>Conclusion:</u> There is adequate evidence from the data to say that the responses vary by facility type.					
(Question 10 continues on next page.)							

10. (cont'd) What is your gross annual income for your primary job, before all deductions?

Analyses limited to respondents who met the following criteria:

- ❖ CCC-SLP
- ❖ Employed full time
- ❖ Annual salary of at least \$1

Response	Facility Type						
	All Facility Types	Special Day/ Residential	Preschool	Elementary	Secondary	Admin. Office	Combina- tion
Worked 11–12 months (calendar year)							
	<i>n</i> = 160	<i>n</i> = 27	<i>n</i> = 34	<i>n</i> = 38	<i>n</i> = 7	<i>n</i> = 23	<i>n</i> = 17
25th percentile	\$62,000	\$59,801	\$62,000	\$69,849	<i>(n</i> < 25)	<i>(n</i> < 25)	<i>(n</i> < 25)
50th percentile (Median)	\$72,000	\$71,000	\$67,569	\$80,000			
75th percentile	\$88,000	\$93,729	\$79,123	\$90,000			
Mean	\$76,200	\$75,391	\$71,576	\$77,307			
Standard deviation	\$21,029	\$19,575	\$15,760	\$15,084			
Mode	\$80,000	\$60,000	\$70,000	\$80,000			
	Statistical significance: $F(5, 140) = 2.1, p = .072$ <u>Conclusion:</u> There is not enough evidence from the data to say that the responses vary by facility type.						

11. For what period of work is this? If you work for 9–10 months but are paid over a 12-month period, select response “1.” Select one response only; then SKIP to Q. 14. (Percentages)

Analyses limited to respondents who met the following criteria:

- ❖ CCC-SLP
- ❖ Employed full time or part time
- ❖ Annual salary of at least \$1

Response	Facility Type						
	All Facility Types (n = 1,720)	Special Day/ Residential (n = 66)	Preschool (n = 209)	Elementary (n = 1,005)	Secondary (n = 232)	Admin. Office (n = 43)	Combina- tion (n = 128)
1 – Work 9 or 10 months per year	90.1	57.6	81.8	96.2	97.0	44.2	84.4
2 – Work 11 or 12 months per year	9.9	42.4	18.2	3.8	3.0	55.8	15.6
3 – Work other period	Removed from analyses						
	Statistical significance: $\chi^2(5) = 271.3$, $p = .000$, Cramer's $V = .401$ <u>Conclusion</u> : There is adequate evidence from the data to say that the responses vary by facility type.						



12. If you are paid on an hourly basis, what is the hourly rate you receive at your primary job? *Include your hourly rate before all deductions.*

Analyses limited to respondents who met the following criteria:

- ❖ CCC-SLP
- ❖ Hourly salary of at least \$1
- ❖ Worked at least 1 hour per week

Response	Facility Type						
	All Facility Types	Special Day/Residential	Preschool	Elementary	Secondary	Admin. Office	Combina-tion
21 or fewer hours							
	<i>n</i> = 136	<i>n</i> = 7	<i>n</i> = 32	<i>n</i> = 50	<i>n</i> = 19	<i>n</i> = 2	<i>n</i> = 15
25th percentile	\$44.00	<i>(n</i> < 25)	\$45.00	\$40.49	<i>(n</i> < 25)	<i>(n</i> < 25)	<i>(n</i> < 25)
50th percentile (Median)	\$54.40		\$60.00	\$50.00			
75th percentile	\$65.00		\$65.00	\$62.00			
Mean	\$56.51		\$56.49	\$55.63			
Standard deviation	\$18.19		\$14.20	\$20.46			
Mode	\$50.00		\$60.00	\$50.00			
		Statistical significance: $F(5, 118) = 0.063, p = .997$ <u>Conclusion:</u> There is not enough evidence from the data to say that the responses vary by facility type.					
(Question 12 continues on next page.)							

12. (cont'd) If you are paid on an hourly basis, what is the hourly rate you receive at your primary job? *Include your hourly rate before all deductions.*

Analyses limited to respondents who met the following criteria:

- ❖ CCC-SLP
- ❖ Hourly salary of at least \$1
- ❖ Worked at least 1 hour per week

Response	Facility Type						
	All Facility Types	Special Day/ Residential	Preschool	Elementary	Secondary	Admin. Office	Combina- tion
More than 21 hours							
	<i>n</i> = 130	<i>n</i> = 4	<i>n</i> = 17	<i>n</i> = 77	<i>n</i> = 9	<i>n</i> = 0	<i>n</i> = 12
25th percentile	\$38.21	<i>(n</i> < 25)	<i>(n</i> < 25)	\$39.13	<i>(n</i> < 25)	<i>(n</i> < 25)	<i>(n</i> < 25)
50th percentile (Median)	\$50.00			\$51.00			
75th percentile	\$60.00			\$60.00			
Mean	\$50.68			\$51.09			
Standard deviation	\$16.58			\$14.91			
Mode	\$60.00			\$60.00			
		Statistical significance: $F(5, 113) = 0.515, p = .764$ <u>Conclusion:</u> There is not enough evidence from the data to say that the responses vary by facility type.					

13. How many hours do you work per week for the hourly rate you entered in Q. 12?

Analyses limited to respondents who met the following criteria:

- ❖ CCC-SLP
- ❖ Hourly salary of at least \$1

Hours	Facility Type						
	All Facility Types (n = 265)	Special Day/ Residential (n = 11)	Preschool (n = 49)	Elementary (n = 127)	Secondary (n = 28)	Admin. Office (n = 2)	Combina- tion (n = 27)
25th percentile	14.8	(n < 25)	14.0	16.0	15.0	(n < 25)	12.1
50th percentile (Median)	21.0		17.0	30.0	18.0		21.0
75th percentile	35.0		34.3	37.5	23.3		35.1
Mean	23.9		20.9	26.8	19.8		23.2
Standard deviation	11.0		10.7	11.0	8.5		10.9
Mode	37.5		35.0	40.0	15.0		37.5
		Statistical significance: $F(5, 238) = 3.96, p = .002$ <u>Conclusion</u> : There is adequate evidence from the data to say that the responses vary by facility type.					



Performance Evaluation

<p>14. What system or tool is used to evaluate your performance? <i>Select all that apply.</i> Analyses limited to respondents who met the following criteria: ❖ CCC-SLP ❖ Employed full time or part time</p>							
Response	Facility Type						
	All Facility Types (n = 2,109)	Special Day/ Residential (n ≥ 83)	Preschool (n = 279)	Elementary (n ≥ 1,195)	Secondary (n ≥ 278)	Admin. Office (n ≥ 49)	Combina- tion (n ≥ 163)
A performance evaluation system that is also used for classroom teachers	50.6	56.0	58.4	49.7	52.9	26.0	50.0
	Statistical significance: $\chi^2(5) = 20.8$, $p = .001$, Cramer's $V = .101$ <u>Conclusion:</u> There is adequate evidence from the data to say that the responses vary by facility type.						
A performance evaluation system that is customized for audiologists or SLPs	31.9	28.9	24.4	35.2	33.7	32.7	22.6
	Statistical significance: $\chi^2(5) = 20.4$, $p = .001$, Cramer's $V = .100$ <u>Conclusion:</u> There is adequate evidence from the data to say that the responses vary by facility type.						
The ASHA Performance Assessment of Contributions and Effectiveness of SLPs (PACE)	0.8	0.0	0.7	0.7	0.7	0.0	0.0
	Too many cells (42%) have an expected count of less than 5. <u>Conclusion:</u> Too little data are available in some facility categories to test whether responses vary by facility type.						
(Question 14 continues on next page.)							

14. (cont'd) What system or tool is used to evaluate your performance? *Select all that apply.*

Analyses limited to respondents who met the following criteria:

- ❖ CCC-SLP
- ❖ Employed full time or part time

Response	Facility Type						
	All Facility Types (n = 2,109)	Special Day/ Residential (n ≥ 83)	Preschool (n = 279)	Elementary (n ≥ 1,195)	Secondary (n ≥ 278)	Admin. Office (n ≥ 49)	Combina- tion (n ≥ 163)
Other, specify:*	15.1	11.9	13.6	13.5	11.5	36.7	23.9
		Statistical significance: $\chi^2(5) = 34.8$, $p = .000$, Cramer's $V = .130$ <u>Conclusion</u> : There is adequate evidence from the data to say that the responses vary by facility type.					

*Includes *none* as a response

Caseload

15. Do you provide clinical services (i.e., either diagnostics or treatment services) to students? (Percentages)

Analyses limited to respondents who met the following criteria:

- ❖ CCC-SLP
- ❖ Clinical service provider
- ❖ Employed full time or part time

Response	Facility Type						
	All Facility Types (n = 1,852)	Special Day/ Residential (n = 70)	Preschool (n = 242)	Elementary (n = 1,119)	Secondary (n = 259)	Admin. Office	Combina- tion (n = 110)
Yes	99.5	100.0	100.0	99.7	99.6	Removed from analyses	98.2
No (SKIP to Q. 23.)	0.5	0.0	0.0	0.3	0.4		1.8
		Too many cells (50%) have an expected count of less than 5. <u>Conclusion</u> : Too little data are available in some facility categories to test whether responses vary by facility type.					

16. What is your average monthly caseload size? *Count each student only once.*

Analyses limited to respondents who met the following criteria:

- ❖ CCC-SLP
- ❖ Clinical service provider
- ❖ Employed full time
- ❖ Response greater than 0

Response	Facility Type						
	All Facility Types (n = 1,539)	Special Day/ Residential (n = 56)	Preschool (n = 177)	Elementary (n = 968)	Secondary (n = 215)	Admin. Office	Combina- tion (n = 87)
25th percentile	36.0	16	30	40	38	Removed from analyses	32
50th percentile (Median)	48.0	27	40	50	48		48
75th percentile	59.0	45	50	60	60		60
Mean	47.5	34	40	50	48		47
Standard deviation	17.2	24	15	16	17		16
Mode	50.0	16	50	50	60		50
		Statistical significance: $F(4, 1498) = 24.1, p = .000$ <u>Conclusion:</u> There is adequate evidence from the data to say that the responses vary by facility type.					

17. Indicate how many students you serve monthly in each of the following areas. *Students who have overlapping areas of intervention may be counted more than once.*

Analyses limited to respondents who met the following criteria:

- ❖ CCC-SLP
- ❖ Clinical service provider
- ❖ Employed full time
- ❖ Response to Q. 16 (caseload size) is at least 1

Area of Intervention	Facility Type					
	All Facility Types		Special Day/Residential		Preschool	
	Percentage who regularly serve clients with this disorder	Number served (mean)*	Percentage who regularly serve clients with this disorder	Number served (mean)*	Percentage who regularly serve clients with this disorder	Number served (mean)*
	<i>n</i> = 1,539	<i>n</i> varies	<i>n</i> = 56	<i>n</i> varies	<i>n</i> = 177	<i>n</i> varies
Acquired brain injury (ABI)	14.6	1.6	18.2	(<i>n</i> < 25)	8.6	(<i>n</i> < 25)
Auditory processing disorder (APD)	31.9	5.3	36.4	(<i>n</i> < 25)	16.3	2.9
Autism spectrum disorder (ASD)	90.2	9.6	90.4	15.7	87.1	8.6
Childhood apraxia of speech (CAS)	60.4	2.9	53.3	3.4	74.3	3.5
Cognitive communication disorders	48.1	9.3	58.6	18.3	39.4	7.0
Dysphagia (swallowing/feeding)	10.5	2.6	32.9	(<i>n</i> < 25)	12.4	(<i>n</i> < 25)
Fluency disorders	67.4	2.5	33.8	(<i>n</i> < 25)	49.7	1.9
Hearing loss	44.8	2.3	28.9	(<i>n</i> < 25)	33.8	2.9
Language disorders: pragmatics/social communication	84.8	11.1	78.5	19.1	74.1	10.1

(Question 17 continues on next page.)

Note. *n* = 1,539. SLP = speech-language pathologist.

*Includes only SLPs who do serve these students.

17. (cont'd) Indicate how many students you serve monthly in each of the following areas. *Students who have overlapping areas of intervention may be counted more than once.*

Analyses limited to respondents who met the following criteria:

- ❖ CCC-SLP
- ❖ Clinical service provider
- ❖ Employed full time
- ❖ Response to Q. 16 (caseload size) is at least 1

Area of Intervention	Facility Type					
	All Facility Types		Special Day/Residential		Preschool	
	Percentage who regularly serve clients with this disorder	Number served (mean)*	Percentage who regularly serve clients with this disorder	Number served (mean)*	Percentage who regularly serve clients with this disorder	Number served (mean)*
	<i>n</i> = 1,539	<i>n</i> varies	<i>n</i> = 56	<i>n</i> varies	<i>n</i> = 177	<i>n</i> varies
Language disorders: semantics, morphology, syntax	90.8	21.4	66.3	22.4	85.8	18.0
Nonverbal, augmentative and alternative communication (AAC)	60.3	5.3	70.8	12.1	64.5	5.2
Reading and writing (literacy)	30.5	13.6	34.5	(<i>n</i> < 25)	6.0	(<i>n</i> < 25)
Selective mutism	18.6	1.3	10.3	(<i>n</i> < 25)	19.7	1.2
Speech sound disorders	89.9	18.0	68.4	8.8	89.0	17.3
Voice or resonance disorders	18.6	1.7	15.4	(<i>n</i> < 25)	14.7	1.4

(Question 17 continues on next page.)

Note. *n* = 1,539. SLP = speech-language pathologist.

*Includes only SLPs who do serve these students.

17. (cont'd) Indicate how many students you serve in each of the following areas. *Students who have overlapping areas of intervention may be counted more than once.*

Analyses limited to respondents who met the following criteria:

- ❖ CCC-SLP
- ❖ Clinical service provider
- ❖ Employed full time
- ❖ Response to Q. 16 (caseload size) is at least 1

Area of Intervention	Facility Type					
	Elementary		Secondary		Combination	
	Percentage who regularly serve clients with this disorder	Number served (mean)*	Percentage who regularly serve clients with this disorder	Number served (mean)*	Percentage who regularly serve clients with this disorder	Number served (mean)*
	<i>n</i> = 968	<i>n</i> varies	<i>n</i> = 215	<i>n</i> varies	<i>n</i> = 87	<i>n</i> varies
Acquired brain injury (ABI)	14.4	1.4	18.9	1.6	16.5	(<i>n</i> < 25)
Auditory processing disorder (APD)	31.1	4.6	47.6	8.3	37.5	4.6
Autism spectrum disorder (ASD)	90.6	8.5	92.1	13.5	91.4	9.8
Childhood apraxia of speech (CAS)	63.1	2.8	38.3	2.3	60.0	(<i>n</i> < 25)
Cognitive communication disorders	47.5	8.1	53.0	12.1	52.7	11.2
Dysphagia (swallowing/feeding)	8.5	2.5	8.4	(<i>n</i> < 25)	14.5	(<i>n</i> < 25)
Fluency disorders	72.9	2.6	70.8	2.7	64.9	2.1
Hearing loss	46.7	2.0	52.2	2.5	44.1	3.5
Language disorders: pragmatics/social communication	86.3	9.7	90.4	15.4	83.9	12.2

(Question 17 continues on next page.)

Note. *n* = 1,539. SLP = speech-language pathologist.

*Includes only SLPs who do serve these students.

17. (cont'd) Indicate how many students you serve in each of the following areas. *Students who have overlapping areas of intervention may be counted more than once.*

Analyses limited to respondents who met the following criteria:

- ❖ CCC-SLP
- ❖ Clinical service provider
- ❖ Employed full time
- ❖ Response to Q. 16 (caseload size) is at least 1

Area of Intervention	Facility Type					
	Elementary		Secondary		Combination	
	Percentage who regularly serve clients with this disorder	Number served (mean)*	Percentage who regularly serve clients with this disorder	Number served (mean)*	Percentage who regularly serve clients with this disorder	Number served (mean)*
	<i>n</i> = 968	<i>n</i> varies	<i>n</i> = 215	<i>n</i> varies	<i>n</i> = 87	<i>n</i> varies
Language disorders: semantics, morphology, syntax	92.9	21.3	92.0	24.2	94.9	21.7
Nonverbal, augmentative and alternative communication (AAC)	58.5	4.5	61.2	5.4	70.7	7.1
Reading and writing (literacy)	31.1	12.6	48.2	17.8	33.1	14.2
Selective mutism	18.0	1.4	22.6	1.4	17.3	(<i>n</i> < 25)
Speech sound disorders	93.7	20.8	78.7	7.3	93.3	16.1
Voice or resonance disorders	20.1	1.6	20.0	1.9	9.7	(<i>n</i> < 25)

Note. *n* = 1,539. SLP = speech-language pathologist.

*Includes only SLPs who do serve these students.

18. What is the approximate number of students in your caseload receiving the following amount of therapy per week?

Analyses limited to respondents who met the following criteria:

- ❖ CCC-SLP
- ❖ Clinical service provider
- ❖ Employed full time
- ❖ Response to Q. 16 (caseload size) is at least 1

Response	Facility Type						Admin. Office	Combina- tion
	All Facility Types	Special Day/ Residential	Preschool	Elementary	Secondary			
Up to 1 hour								
	<i>n</i> = 1,351	<i>n</i> = 43	<i>n</i> = 148	<i>n</i> = 871	<i>n</i> = 186			<i>n</i> = 76
25th percentile	26.0	5.4	19.0	30.0	29.5	Removed from analyses		30.0
50th percentile (Median)	40.0	24.8	34.0	43.0	40.0			44.5
75th percentile	53.0	47.5	46.0	55.0	52.0			56.0
Mean	40.0	27.8	32.9	41.7	39.5			41.5
Standard deviation	19.8	21.5	18.8	19.2	20.2			20.0
Mode	50.0	2.0	30.0	50.0	50.0			30.0
	Tests of significance could not be run using the available software.							
(Question 18 continues on next page.)								

18. (cont'd) What is the approximate number of students in your caseload receiving the following amount of therapy per week?

Analyses limited to respondents who met the following criteria:

- ❖ CCC-SLP
- ❖ Clinical service provider
- ❖ Employed full time
- ❖ Response to Q. 16 (caseload size) is at least 1

Response	Facility Type						Admin. Office	Combina- tion
	All Facility Types	Special Day/ Residential	Preschool	Elementary	Secondary			
Between 1 and 5 hours								
	<i>n</i> = 890	<i>n</i> = 41	<i>n</i> = 96	<i>n</i> = 572	<i>n</i> = 125			<i>n</i> = 44
25th percentile	3.0	5.0	3.0	2.0	4.0	Removed from analyses		3.0
50th percentile (Median)	7.0	11.0	10.0	6.0	8.0			10.0
75th percentile	20.0	16.0	20.0	17.0	24.0			20.8
Mean	13.0	11.2	14.0	12.3	14.6			14.9
Standard deviation	14.3	7.8	14.0	14.2	13.9			15.7
Mode	2.0	16.0	5.0	2.0	5.0			3.0
	Tests of significance could not be run using the available software.							
(Question 18 continues on next page.)								

18. (cont'd) What is the approximate number of students in your caseload receiving the following amount of therapy per week?

Analyses limited to respondents who met the following criteria:

- ❖ CCC-SLP
- ❖ Clinical service provider
- ❖ Employed full time
- ❖ Response to Q. 16 (caseload size) is at least 1

Response	Facility Type						
	All Facility Types	Special Day/ Residential	Preschool	Elementary	Secondary	Admin. Office	Combina- tion
More than 5 hours							
	<i>n</i> = 31	<i>n</i> = 0	<i>n</i> = 2	<i>n</i> = 24	<i>n</i> = 4		<i>n</i> = 0
25th percentile	0.8	<i>(n</i> < 25)	<i>(n</i> < 25)	<i>(n</i> < 25)	<i>(n</i> < 25)	Removed from analyses	<i>(n</i> < 25)
50th percentile (Median)	2.0						
75th percentile	12.0						
Mean	7.8						
Standard deviation	11.6						
Mode	0.0						
	Tests of significance could not be run using the available software.						

19. How many hours do you spend on each of the following activities in a typical WEEK? Enter "0" if none. (Mean hours)

Analyses limited to respondents who met the following criteria:

- ❖ CCC-SLP
- ❖ Clinical service provider
- ❖ Employed full time
- ❖ Response to Q. 16 (caseload size) is at least 1
- ❖ Total number of hours for Q. 19 was limited to a maximum of 52 which captured 97% of respondents.

Activity	Facility Type						
	All Facility Types (n = 1,423)	Special Day/ Residential (n = 52)	Preschool (n = 163)	Elementary (n = 892)	Secondary (n = 200)	Admin. Office	Combina- tion (n = 84)
MTSS/RTI activities	2.2	2.2	2.3	2.3	2.0	Removed from analyses	2.2
Diagnostic evaluations (e.g., observation, screening, scoring, analysis)	4.4	4.0	4.9	4.3	4.6		4.3
Direct intervention: classroom based/ integrated services	7.3	9.9	12.2	5.1	9.4		9.5
Direct intervention: pullout	20.2	16.1	16.8	21.8	17.8		19.3
Collaborative consultation	2.3	2.7	2.8	2.0	2.7		2.6
Services to section 504 students	2.2	1.0	1.6	2.1	1.6		8.1
Technological support (e.g., hearing aids/ CIs, AAC)	1.8	2.6	1.5	1.6	2.1		1.9
Supervision	4.0	3.0	3.9	4.4	3.3		3.7
Tests of significance could not be run using the available software.							

Note. MTSS = multi-tiered system of support. RTI = response to intervention. CI = cochlear implant. AAC = augmentative and alternative communication.

20. Under what circumstances are you required to make up missed sessions? <i>Select all that apply.</i> (Percentages)							
Analyses limited to respondents who met the following criteria:							
❖ CCC-SLP							
❖ Clinical service provider							
❖ Employed full time or part time							
Response	Facility Type						
	All Facility Types (n = 1,864)	Special Day/ Residential (n ≥ 70)	Preschool (n ≥ 242)	Elementary (n = 1,129)	Secondary (n ≥ 260)	Admin. Office	Combina- tion (n = 110)
I am not required to make up missed sessions.	39.5	32.4	38.3	40.6	40.8	Removed from analyses	40.0
	Statistical significance: $\chi^2(4) = 2.2, p = .694$ <u>Conclusion:</u> There is not enough evidence from the data to say that the responses vary by facility type.						
When the student misses a session due to assembly or classroom activity.	13.4	14.3	10.7	14.3	12.6	Removed from analyses	12.7
	Statistical significance: $\chi^2(4) = 2.4, p = .664$ <u>Conclusion:</u> There is not enough evidence from the data to say that the responses vary by facility type.						
Any time a student misses a session for any reason.	8.6	14.3	7.4	8.1	6.9	Removed from analyses	10.9
	Statistical significance: $\chi^2(4) = 5.3, p = .260$ <u>Conclusion:</u> There is not enough evidence from the data to say that the responses vary by facility type.						
Any time I miss a session for any reason.	54.3	59.2	57.0	52.1	55.8	Removed from analyses	55.5
	Statistical significance: $\chi^2(4) = 3.7, p = .448$ <u>Conclusion:</u> There is not enough evidence from the data to say that the responses vary by facility type.						

21. What is your role on the multi-tiered system of support (MTSS)/response to intervention (RTI) or pre-referral team? *Select all that apply.* (Percentages)

Analyses limited to respondents who met the following criteria:

- ❖ CCC-SLP
- ❖ Clinical service provider
- ❖ Employed full time or part time

Role	Facility Type						
	All Facility Types (n = 1,864)	Special Day/ Residential (n ≥ 70)	Preschool (n ≥ 242)	Elementary (n = 1,129)	Secondary (n ≥ 260)	Admin. Office	Combina- tion (n = 110)
Conduct screenings.	54.1	5.6	40.1	64.3	43.8	Removed from analyses	47.3
	Statistical significance: $\chi^2(4) = 146.7$, $p = .000$, Cramer's $V = .285$ <u>Conclusion</u> : There is adequate evidence from the data to say that the responses vary by facility type.						
Provide consultation as a member of the pre-referral team.	54.5	15.7	38.0	64.7	46.7	Removed from analyses	40.9
	Statistical significance: $\chi^2(4) = 130.5$, $p = .000$, Cramer's $V = .268$ <u>Conclusion</u> : There is adequate evidence from the data to say that the responses vary by facility type.						
Provide direct services within general education.	27.2	7.0	22.6	32.7	19.2	Removed from analyses	20.9
	Statistical significance: $\chi^2(4) = 44.1$, $p = .000$, Cramer's $V = .156$ <u>Conclusion</u> : There is adequate evidence from the data to say that the responses vary by facility type.						
(Question 21 continues on next page.)							

21. (cont'd) What is your role on the multi-tiered system of support (MTSS)/response to intervention (RTI) or pre-referral team?

Select all that apply. (Percentages)

Analyses limited to respondents who met the following criteria:

- ❖ CCC-SLP
- ❖ Clinical service provider
- ❖ Employed full time or part time

Role	Facility Type						
	All Facility Types (n = 1,864)	Special Day/ Residential (n ≥ 70)	Preschool (n ≥ 242)	Elementary (n = 1,129)	Secondary (n ≥ 260)	Admin. Office	Combina- tion (n = 110)
Provide strategies to classroom teachers.	57.0	15.5	41.6	66.9	48.7	Removed from analyses	47.3
	Statistical significance: $\chi^2(4) = 130.3$, $p = .000$, Cramer's $V = .268$ <u>Conclusion</u> : There is adequate evidence from the data to say that the responses vary by facility type.						
Not applicable; I don't participate in MTSS/RTI or pre-referral.	27.5	81.4	43.6	16.5	35.4	Removed from analyses	35.5
	Statistical significance: $\chi^2(4) = 218.4$, $p = .000$, Cramer's $V = .347$ <u>Conclusion</u> : There is adequate evidence from the data to say that the responses vary by facility type.						

Note. MTSS = multi-tiered system of support. RTI = response to intervention.



Birth Through Five

22. Select up to three (3) of the top issues that affect your work with children 5 and under. (Percentages) Analyses limited to respondents who met the following criteria: ❖ CCC-SLP ❖ Clinical service provider							
Issue	Facility Type						
	All Facility Types (n = 1,620)	Special Day/ Residential (n ≥ 65)	Preschool (n ≥ 236)	Elementary (n = 968)	Secondary (n = 200)	Admin. Office	Combina- tion (n ≥ 103)
Changing eligibility criteria that exclude children who need services	20.4	12.1	36.0	18.9	7.0	Removed from analyses	23.3
		Statistical significance: $\chi^2(4) = 63.0$, $p = .000$, Cramer's $V = .200$ <u>Conclusion:</u> There is adequate evidence from the data to say that the responses vary by facility type.					
Inadequate reimbursement or funding for services	11.1	9.1	24.2	8.8	4.5	Removed from analyses	15.5
		Statistical significance: $\chi^2(4) = 57.6$, $p = .000$, Cramer's $V = .191$ <u>Conclusion:</u> There is adequate evidence from the data to say that the responses vary by facility type.					
Lack of qualified providers to deliver services	15.8	7.6	23.6	16.3	3.0	Removed from analyses	18.3
		Statistical significance: $\chi^2(4) = 40.1$, $p = .000$, Cramer's $V = .160$ <u>Conclusion:</u> There is adequate evidence from the data to say that the responses vary by facility type.					
(Question 22 continues on next page.)							

ASHA 2018 SLP Schools Survey: Survey Summary Report

22. (cont'd) Select up to three (3) of the top issues that affect your work with children 5 and under. (Percentages)

Analyses limited to respondents who met the following criterion:

- ❖ CCC-SLP
- ❖ Clinical service provider

Issue	Facility Type						
	All Facility Types (n = 1,620)	Special Day/ Residential (n ≥ 65)	Preschool (n ≥ 236)	Elementary (n = 968)	Secondary (n = 200)	Admin. Office	Combina- tion (n ≥ 103)
Lack of sufficient training or professional development for audiologists or SLPs	9.7	9.1	12.7	10.8	3.5	Removed from analyses	7.7
	Statistical significance: $\chi^2(4) = 12.8$, $p = .012$, Cramer's $V = .090$ <u>Conclusion</u> : There is adequate evidence from the data to say that the responses vary by facility type.						
Other professionals taking primary role in communication or swallowing services	8.2	9.1	13.1	6.9	4.5	Removed from analyses	9.7
	Statistical significance: $\chi^2(4) = 13.9$, $p = .008$, Cramer's $V = .094$ <u>Conclusion</u> : There is adequate evidence from the data to say that the responses vary by facility type.						
Parents who are not receptive to coaching	21.9	15.4	29.5	21.9	6.0	Removed from analyses	27.2
	Statistical significance: $\chi^2(4) = 41.5$, $p = .000$, Cramer's $V = .162$ <u>Conclusion</u> : There is adequate evidence from the data to say that the responses vary by facility type.						
Serving as primary provider in areas outside my scope	8.3	6.1	12.7	8.2	3.0	Removed from analyses	10.6
	Statistical significance: $\chi^2(4) = 14.5$, $p = .006$, Cramer's $V = .096$ <u>Conclusion</u> : There is adequate evidence from the data to say that the responses vary by facility type.						

(Question 22 continues on next page.)

22. (cont'd) Select up to three (3) of the top issues that affect your work with children 5 and under. (Percentages)

Analyses limited to respondents who met the following criterion:

- ❖ CCC-SLP
- ❖ Clinical service provider

Issue	Facility Type						
	All Facility Types (n = 1,620)	Special Day/ Residential (n ≥ 65)	Preschool (n ≥ 236)	Elementary (n = 968)	Secondary (n = 200)	Admin. Office	Combina- tion (n ≥ 103)
None of the above or NA	51.2	69.2	25.0	51.1	84.5	Removed from analyses	47.6
		Statistical significance: $\chi^2(4) = 162.4$, $p = .000$, Cramer's $V = .321$ <u>Conclusion:</u> There is adequate evidence from the data to say that the responses vary by facility type.					



Supervision

23. Within your professional area (i.e., audiology or speech-language pathology), how qualified are you to supervise audiology or SLP assistants?

Scale: 1 = *Not at all qualified* → 5 = *Very qualified*

Analyses limited to respondents who met the following criterion:

❖ CCC-SLP

Response	Facility Type						
	All Facility Types (n = 1,983)	Special Day/ Residential (n = 76)	Preschool (n = 266)	Elementary (n = 1,126)	Secondary (n = 253)	Admin. Office (n = 49)	Combina- tion (n = 154)
1 – <i>Not at all qualified</i>	2.6	2.6	3.0	3.1	1.2	2.0	0.0
2	2.9	5.3	2.6	2.6	3.2	0.0	3.2
3	15.1	11.8	17.7	14.6	18.6	4.1	15.6
4	28.6	34.2	25.6	30.1	27.7	14.3	26.6
5 – <i>Very qualified</i>	50.8	46.1	51.1	49.6	49.4	79.6	54.5
		Too many cells (20%) have an expected count of less than 5. <u>Conclusion:</u> Too little data are available in some facility categories to test whether responses vary by facility type.					

24. How many audiology or SLP assistants do you currently supervise? Put "0" if none. If "0," skip to Q. 26.

Analyses limited to respondents who met the following criteria:

- ❖ CCC-SLP
- ❖ Clinical service provider or diagnostician
- ❖ Employed full time or part time
- ❖ Response greater than 0

Response	Facility Type						
	All Facility Types (n = 240)	Special Day/ Residential (n = 12)	Preschool (n = 32)	Elementary (n = 145)	Secondary (n = 24)	Admin. Office	Combina- tion (n = 21)
25th percentile	1.0	(n < 25)	1.0	1.0	(n < 25)	Removed from analyses	(n < 25)
50th percentile (Median)	1.0		1.0	1.0			
75th percentile	1.0		1.0	1.0			
Mean	1.4		1.2	1.3			
Standard deviation	1.2		0.7	1.0			
Mode	1.0		1.0	1.0			
		Statistical significance: $F(4, 228) = 3.7, p = .006$ <u>Conclusion</u> : There is adequate evidence from the data to say that the responses vary by facility type.					

25. How does supervision of the audiology or SLP assistant impact your caseload and workload? *“Caseload” is based only on the number of students served, whereas “workload” is based on ALL required and performed activities.* (Percentages)

Analyses limited to respondents who met the following criteria:

- ❖ CCC-SLP
- ❖ Clinical service provider or diagnostician
- ❖ Employed full time or part time
- ❖ Response to Q. 24 (number of aides) is greater than 0

Impact	Facility Type						
	All Facility Types (n = 238)	Special Day/ Residential (n = 13)	Preschool (n = 32)	Elementary (n ≥ 143)	Secondary (n ≥ 22)	Admin. Office	Combina- tion (n = 20)
Caseload							
Increases my caseload	26.7	(n < 25)	21.9	25.2	(n < 25)	Removed from analyses	(n < 25)
Decreases my caseload	35.9	(n < 25)	28.1	41.3	(n < 25)	Removed from analyses	(n < 25)
No impact on my caseload	33.3	(n < 25)	43.8	31.5	(n < 25)	Removed from analyses	(n < 25)
Don't know, NA (caseload)	4.0	(n < 25)	6.3	2.1	(n < 25)	Removed from analyses	(n < 25)
		Too many cells (35%) have an expected count of less than 5. <u>Conclusion:</u> Too little data are available in some facility categories to test whether responses vary by facility type.					
Workload							
Increases my workload	46.3	(n < 25)	43.8	43.8	(n < 25)	Removed from analyses	(n < 25)
Decreases my workload	30.3	(n < 25)	37.5	33.3	(n < 25)	Removed from analyses	(n < 25)
No impact on my workload	19.8	(n < 25)	12.5	20.8	(n < 25)	Removed from analyses	(n < 25)
Don't know, NA (workload)	3.7	(n < 25)	6.3	2.1	(n < 25)	Removed from analyses	(n < 25)
		Too many cells (40%) have an expected count of less than 5. <u>Conclusion:</u> Too little data are available in some facility categories to test whether responses vary by facility type.					

Ethics

26. Which of the issues below present you with significant ethical challenges? *Select all that apply.* (Percentages) Responses were in alphabetical order on survey instrument.

Analyses limited to respondents who met the following criterion:

❖ CCC-SLP

Challenge	Facility Type						
	All Facility Types (n = 2,170)	Special Day/ Residential (n ≥ 83)	Preschool (n = 280)	Elementary (n ≥ 1,195)	Secondary (n = 279)	Admin. Office (n = 49)	Combina- tion (n ≥ 163)
Compromising quality of services	40.5	39.3	46.4	44.5	35.1	22.4	33.7
	Statistical significance: $\chi^2(5) = 23.3, p = .000$, Cramer's $V = .107$ <u>Conclusion:</u> There is adequate evidence from the data to say that the responses vary by facility type.						
Adhering to administrative and regulatory mandates	20.6	26.2	22.5	22.0	16.8	20.4	17.7
	Statistical significance: $\chi^2(5) = 6.4, p = .270$ <u>Conclusion:</u> There is not enough evidence from the data to say that the responses vary by facility type.						
Completing Medicaid billing	17.8	13.3	18.2	19.5	16.1	16.3	18.3
	Statistical significance: $\chi^2(5) = 3.5, p = .624$ <u>Conclusion:</u> There is not enough evidence from the data to say that the responses vary by facility type.						

(Question 26 continues on next page.)

ASHA 2018 SLP Schools Survey: Survey Summary Report

26. (cont'd) Which of the issues below present you with significant ethical challenges? *Select all that apply.* (Percentages)

Responses were in alphabetical order on survey instrument.

Analyses limited to respondents who met the following criterion:

❖ CCC-SLP

Challenge	Facility Type						
	All Facility Types (n = 2,170)	Special Day/ Residential (n ≥ 83)	Preschool (n = 280)	Elementary (n ≥ 1,195)	Secondary (n = 279)	Admin. Office (n = 49)	Combina- tion (n ≥ 163)
Feeling pressured by an employer, administrator, or supervisor to provide or deny a service, report scores, etc. that would be in violation of the ASHA Code of Ethics	12.9	15.5	13.9	12.7	15.1	8.2	16.0
		Statistical significance: $\chi^2(5) = 3.6, p = .614$ <u>Conclusion:</u> There is not enough evidence from the data to say that the responses vary by facility type.					
Supervising support personnel, CFs, etc.	2.3	1.2	2.9	2.3	2.2	4.1	1.8
		Too many cells (25%) have an expected count of less than 5. <u>Conclusion:</u> Too little data are available in some facility categories to test whether responses vary by facility type.					
Reading confidential or inappropriate information about a student posted by an audiologist or SLP on social media	1.7	3.6	1.4	1.7	2.5	0.0	1.2
		Too many cells (42%) have an expected count of less than 5. <u>Conclusion:</u> Too little data are available in some facility categories to test whether responses vary by facility type.					

(Question 26 continues on next page.)

26. (cont'd) Which of the issues below present you with significant ethical challenges? *Select all that apply.* (Percentages)

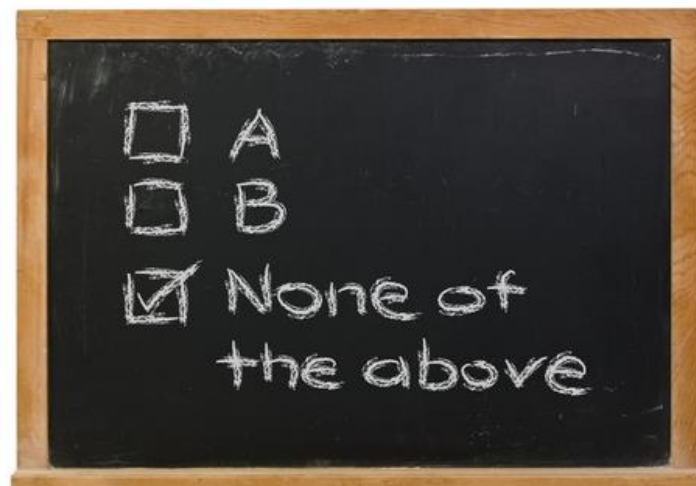
Responses were in alphabetical order on survey instrument.

Analyses limited to respondents who met the following criterion:

❖ CCC-SLP

Challenge	Facility Type						
	All Facility Types (n = 2,170)	Special Day/ Residential (n ≥ 83)	Preschool (n = 280)	Elementary (n ≥ 1,195)	Secondary (n = 279)	Admin. Office (n = 49)	Combina- tion (n ≥ 163)
None of the above	39.6	48.2	36.8	38.2	45.9	53.1	45.1
		Statistical significance: $\chi^2(5) = 14.3$, $p = .014$, Cramer's $V = .083$ <u>Conclusion:</u> There is adequate evidence from the data to say that the responses vary by facility type.					

Note. CF = Clinical Fellowship.



Journals

27. Which topics would you be most interested in seeing addressed more often or in more depth in the ASHA journals? *Select all that apply.* (Percentages) Responses were in alphabetical order on survey instrument.

Analyses limited to respondents who met the following criterion:

❖ CCC-SLP

Topic	Facility Type						
	All Facility Types (n = 2,170)	Special Day/ Residential (n ≥ 83)	Preschool (n = 280)	Elementary (n ≥ 1,195)	Secondary (n ≥ 278)	Admin. Office (n ≥ 49)	Combina- tion (n ≥ 163)
Social communication and pragmatic disorders	60.8	73.8	61.8	58.7	74.2	69.4	54.3
	Statistical significance: $\chi^2(5) = 33.3$, p = .000 , Cramer's V = .127 <u>Conclusion</u> : There is adequate evidence from the data to say that the responses vary by facility type.						
Autism spectrum disorder (ASD)	50.2	67.5	51.8	48.7	54.8	53.1	45.7
	Statistical significance: $\chi^2(5) = 14.9$, p = .011 , Cramer's V = .085 <u>Conclusion</u> : There is adequate evidence from the data to say that the responses vary by facility type.						
Childhood apraxia of speech (CAS)	48.2	34.9	70.0	49.9	23.7	44.9	45.4
	Statistical significance: $\chi^2(5) = 128.6$, p = .000 , Cramer's V = .250 <u>Conclusion</u> : There is adequate evidence from the data to say that the responses vary by facility type.						
Specific language impairment (SLI)	42.5	17.9	35.7	48.4	39.8	42.9	34.1
	Statistical significance: $\chi^2(5) = 48.4$, p = .000 , Cramer's V = .154 <u>Conclusion</u> : There is adequate evidence from the data to say that the responses vary by facility type.						

(Question 27 continues on next page.)

ASHA 2018 SLP Schools Survey: Survey Summary Report

27. (cont'd) Which topics would you be most interested in seeing addressed more often or in more depth in the ASHA journals?
Select all that apply. (Percentages) Responses were in alphabetical order on survey instrument.

Analyses limited to respondents who met the following criterion:

❖ CCC-SLP

Topic	Facility Type						
	All Facility Types (n = 2,170)	Special Day/ Residential (n ≥ 83)	Preschool (n = 280)	Elementary (n ≥ 1,195)	Secondary (n ≥ 278)	Admin. Office (n ≥ 49)	Combination (n ≥ 163)
Augmentative and alternative communication (AAC)	39.9	60.7	39.3	37.2	45.5	49.0	43.3
	Statistical significance: $\chi^2(5) = 24.7$, $p = .000$, Cramer's $V = .110$ <u>Conclusion:</u> There is adequate evidence from the data to say that the responses vary by facility type.						
Fluency disorders	35.1	12.0	27.1	40.5	40.5	26.0	23.2
	Statistical significance: $\chi^2(5) = 57.0$, $p = .000$, Cramer's $V = .167$ <u>Conclusion:</u> There is adequate evidence from the data to say that the responses vary by facility type.						
Reading and writing (literacy)	33.3	28.6	12.1	35.5	43.4	52.0	34.4
	Statistical significance: $\chi^2(5) = 80.4$, $p = .000$, Cramer's $V = .198$ <u>Conclusion:</u> There is adequate evidence from the data to say that the responses vary by facility type.						
Early identification and intervention	31.7	32.5	60.7	28.4	8.6	36.7	31.7
	Statistical significance: $\chi^2(5) = 185.9$, $p = .000$, Cramer's $V = .301$ <u>Conclusion:</u> There is adequate evidence from the data to say that the responses vary by facility type.						

(Question 27 continues on next page.)

27. (cont'd) Which topics would you be most interested in seeing addressed more often or in more depth in the ASHA journals?
Select all that apply. (Percentages) Responses were in alphabetical order on survey instrument.

Analyses limited to respondents who met the following criterion:

❖ CCC-SLP

Topic	Facility Type						
	All Facility Types (n = 2,170)	Special Day/ Residential (n ≥ 83)	Preschool (n = 280)	Elementary (n ≥ 1,195)	Secondary (n ≥ 278)	Admin. Office (n ≥ 49)	Combination (n ≥ 163)
Cultural and linguistic diversity	24.0	18.1	27.9	23.3	21.9	44.0	25.6
	Statistical significance: $\chi^2(5) = 15.9, p = .007$, Cramer's V = .088 <u>Conclusion:</u> There is adequate evidence from the data to say that the responses vary by facility type.						
Telepractice and computer-based approaches	16.7	12.0	13.6	15.8	17.2	18.0	23.3
	Statistical significance: $\chi^2(5) = 9.0, p = .108$ <u>Conclusion:</u> There is not enough evidence from the data to say that the responses vary by facility type.						
Voice or resonance disorders	10.3	1.2	8.6	11.7	10.8	10.2	9.1
	Statistical significance: $\chi^2(5) = 11.1, p = .050$ <u>Conclusion:</u> There is not enough evidence from the data to say that the responses vary by facility type.						
Traumatic brain injury	9.8	10.7	5.0	8.7	12.2	18.4	14.0
	Statistical significance: $\chi^2(5) = 18.5, p = .002$, Cramer's V = .095 <u>Conclusion:</u> There is adequate evidence from the data to say that the responses vary by facility type.						
Dysphagia (swallowing/feeding)	8.9	15.7	10.4	7.2	6.1	18.4	12.2
	Statistical significance: $\chi^2(5) = 20.5, p = .001$, Cramer's V = .100 <u>Conclusion:</u> There is adequate evidence from the data to say that the responses vary by facility type.						

(Question 27 continues on next page.)

27. (cont'd) Which topics would you be most interested in seeing addressed more often or in more depth in the ASHA journals?
 Select all that apply. (Percentages) Responses were in alphabetical order on survey instrument.

Analyses limited to respondents who met the following criterion:

❖ CCC-SLP

Topic	Facility Type						
	All Facility Types (n = 2,170)	Special Day/ Residential (n ≥ 83)	Preschool (n = 280)	Elementary (n ≥ 1,195)	Secondary (n ≥ 278)	Admin. Office (n ≥ 49)	Combina- tion (n ≥ 163)
Hearing disorders	7.0	7.2	9.3	5.7	7.9	6.1	9.1
	Statistical significance: $\chi^2(5) = 7.0, p = .217$ <u>Conclusion:</u> There is not enough evidence from the data to say that the responses vary by facility type.						
Dysarthria	4.8	3.6	5.0	3.8	5.7	10.2	4.9
	Statistical significance: $\chi^2(5) = 6.7, p = .246$ <u>Conclusion:</u> There is not enough evidence from the data to say that the responses vary by facility type.						
Genetic and congenital disorders	0.7	2.4	0.0	0.7	0.4	0.0	0.0
	Too many cells (42%) have an expected count of less than 5. <u>Conclusion:</u> Too little data are available in some facility categories to test whether responses vary by facility type.						



IDEA

28. Rate the importance of each of the issues below in relation to the Individuals with Disabilities Education Act (IDEA). Scale: 1 = <i>Not at all important</i> → 5 = <i>Very important</i> Analyses limited to respondents who met the following criterion: ❖ CCC-SLP							
Response	Facility Type						
	All Facility Types	Special Day/ Residential	Preschool	Elementary	Secondary	Admin. Office	Combina- tion
American Sign Language (ASL)							
	<i>n</i> = 1,874	<i>n</i> = 73	<i>n</i> = 237	<i>n</i> = 1,027	<i>n</i> = 241	<i>n</i> = 45	<i>n</i> = 146
1 – <i>Not at all important</i>	8.0	8.2	5.1	8.7	9.5	8.9	7.5
2	17.7	15.1	15.6	17.5	21.6	15.6	16.4
3	31.3	26.0	32.5	33.7	24.1	31.1	26.7
4	18.7	23.3	19.4	17.4	18.7	20.0	22.6
5 – <i>Very important</i>	24.3	27.4	27.4	22.7	26.1	24.4	26.7
		Statistical significance: $\chi^2(20) = 20.6, p = .420$ <u>Conclusion</u> : There is not enough evidence from the data to say that the responses vary by facility type.					
(Question 28 continues on next page.)							

28. (cont'd) Rate the importance of each of the issues below in relation to the Individuals with Disabilities Education Act (IDEA).

Scale: 1 = *Not at all important* → 5 = *Very important*

Analyses limited to respondents who met the following criterion:

❖ CCC-SLP

Response	Facility Type						
	All Facility Types	Special Day/ Residential	Preschool	Elementary	Secondary	Admin. Office	Combina- tion
Connection With the Early Hearing Detection and Intervention Program (EHDI)							
	<i>n</i> = 1,500	<i>n</i> = 56	<i>n</i> = 181	<i>n</i> = 831	<i>n</i> = 194	<i>n</i> = 36	<i>n</i> = 116
1 – <i>Not at all important</i>	4.9	5.4	1.7	5.2	7.7	5.6	6.9
2	10.1	10.7	7.7	10.3	9.8	5.6	13.8
3	23.1	25.0	22.7	25.3	16.5	33.3	19.0
4	20.3	21.4	17.1	20.0	22.7	25.0	18.1
5 – <i>Very important</i>	41.6	37.5	50.8	39.2	43.3	30.6	42.2
		Statistical significance: $\chi^2(20) = 27.0, p = .136$ <u>Conclusion</u> : There is not enough evidence from the data to say that the responses vary by facility type.					

(Question 28 continues on next page.)

28. (cont'd) Rate the importance of each of the issues below in relation to the Individuals with Disabilities Education Act (IDEA).

Scale: 1 = *Not at all important* → 5 = *Very important*

Analyses limited to respondents who met the following criterion:

❖ CCC-SLP

Response	Facility Type						
	All Facility Types	Special Day/ Residential	Preschool	Elementary	Secondary	Admin. Office	Combina- tion
Early Childhood							
	<i>n</i> = 1,870	<i>n</i> = 67	<i>n</i> = 245	<i>n</i> = 1,032	<i>n</i> = 231	<i>n</i> = 47	<i>n</i> = 142
1 – <i>Not at all important</i>	1.9	1.5	0.4	1.8	4.3	0.0	2.1
2	2.4	3.0	1.2	2.3	3.5	6.4	3.5
3	12.4	14.9	4.9	13.9	13.0	10.6	15.5
4	23.6	26.9	16.3	25.9	18.2	27.7	22.5
5 – <i>Very important</i>	59.7	53.7	77.1	56.1	61.0	55.3	56.3
		Too many cells (27%) have an expected count of less than 5. <u>Conclusion:</u> Too little data are available in some facility categories to test whether responses vary by facility type.					
(Question 28 continues on next page.)							

28. (cont'd) Rate the importance of each of the issues below in relation to the Individuals with Disabilities Education Act (IDEA).

Scale: 1 = *Not at all important* → 5 = *Very important*

Analyses limited to respondents who met the following criterion:

❖ CCC-SLP

Response	Facility Type						
	All Facility Types	Special Day/ Residential	Preschool	Elementary	Secondary	Admin. Office	Combina- tion
Early Intervention							
	<i>n</i> = 1,917	<i>n</i> = 69	<i>n</i> = 249	<i>n</i> = 1,064	<i>n</i> = 237	<i>n</i> = 47	<i>n</i> = 143
1 – <i>Not at all important</i>	1.7	1.4	0.4	1.5	3.4	0.0	3.5
2	1.8	1.4	1.6	1.6	3.8	4.3	1.4
3	8.0	7.2	2.8	9.1	8.0	8.5	11.2
4	19.0	18.8	15.7	19.5	15.6	31.9	16.8
5 – <i>Very important</i>	69.4	71.0	79.5	68.2	69.2	55.3	67.1
		Too many cells (37%) have an expected count of less than 5. <u>Conclusion:</u> Too little data are available in some facility categories to test whether responses vary by facility type.					
(Question 28 continues on next page.)							

28. (cont'd) Rate the importance of each of the issues below in relation to the Individuals with Disabilities Education Act (IDEA).

Scale: 1 = *Not at all important* → 5 = *Very important*

Analyses limited to respondents who met the following criterion:

❖ CCC-SLP

Response	Facility Type						
	All Facility Types	Special Day/ Residential	Preschool	Elementary	Secondary	Admin. Office	Combina- tion
	Funding						
	<i>n</i> = 1,878	<i>n</i> = 72	<i>n</i> = 236	<i>n</i> = 1,038	<i>n</i> = 241	<i>n</i> = 44	<i>n</i> = 144
1 – <i>Not at all important</i>	2.2	4.2	0.8	1.5	5.0	4.5	4.2
2	3.3	4.2	2.5	2.9	5.0	2.3	5.6
3	10.5	12.5	9.3	11.5	9.1	11.4	10.4
4	20.2	19.4	17.8	20.7	21.2	11.4	16.7
5 – <i>Very important</i>	63.7	59.7	69.5	63.4	59.8	70.5	63.2
		Too many cells (23%) have an expected count of less than 5. <u>Conclusion:</u> Too little data are available in some facility categories to test whether responses vary by facility type.					
(Question 28 continues on next page.)							

28. (cont'd) Rate the importance of each of the issues below in relation to the Individuals with Disabilities Education Act (IDEA).

Scale: 1 = *Not at all important* → 5 = *Very important*

Analyses limited to respondents who met the following criterion:

❖ CCC-SLP

Response	Facility Type						
	All Facility Types	Special Day/ Residential	Preschool	Elementary	Secondary	Admin. Office	Combina- tion
IEP Team Independence/Strengthening							
	<i>n</i> = 1,895	<i>n</i> = 69	<i>n</i> = 236	<i>n</i> = 1,045	<i>n</i> = 247	<i>n</i> = 45	<i>n</i> = 146
1 – <i>Not at all important</i>	2.7	8.7	1.3	2.6	2.8	0.0	2.7
2	8.1	4.3	7.6	8.7	3.6	4.4	13.0
3	26.3	34.8	28.0	28.2	22.7	20.0	16.4
4	29.7	30.4	27.5	28.6	34.8	33.3	30.8
5 – <i>Very important</i>	33.1	21.7	35.6	31.9	36.0	42.2	37.0
		Statistical significance: $\chi^2(20) = 45.7$, <i>p</i> = .001 , Cramer's <i>V</i> = .080 <u>Conclusion</u> : There is adequate evidence from the data to say that the responses vary by facility type.					
(Question 28 continues on next page.)							

Note. IEP = Individualized Education Program.

28. (cont'd) Rate the importance of each of the issues below in relation to the Individuals with Disabilities Education Act (IDEA).

Scale: 1 = *Not at all important* → 5 = *Very important*

Analyses limited to respondents who met the following criterion:

❖ CCC-SLP

Response	Facility Type						
	All Facility Types	Special Day/ Residential	Preschool	Elementary	Secondary	Admin. Office	Combina- tion
Language of intervention for English Language Learners (ELLs)							
	<i>n</i> = 1,713	<i>n</i> = 61	<i>n</i> = 220	<i>n</i> = 948	<i>n</i> = 219	<i>n</i> = 45	<i>n</i> = 127
1 – <i>Not at all important</i>	3.9	4.9	4.5	4.0	4.1	0.0	3.1
2	8.7	8.2	8.2	8.8	7.3	8.9	10.2
3	27.7	41.0	25.0	29.5	25.6	15.6	24.4
4	28.2	24.6	26.8	26.2	32.0	33.3	34.6
5 – <i>Very important</i>	31.5	21.3	35.5	31.5	31.1	42.2	27.6
		Statistical significance: $\chi^2(20) = 22.5, p = .312$ <u>Conclusion</u> : There is not enough evidence from the data to say that the responses vary by facility type.					
(Question 28 continues on next page.)							

28. (cont'd) Rate the importance of each of the issues below in relation to the Individuals with Disabilities Education Act (IDEA).

Scale: 1 = *Not at all important* → 5 = *Very important*

Analyses limited to respondents who met the following criterion:

❖ CCC-SLP

Response	Facility Type						
	All Facility Types	Special Day/ Residential	Preschool	Elementary	Secondary	Admin. Office	Combina- tion
Paperwork Reduction							
	<i>n</i> = 1,933	<i>n</i> = 70	<i>n</i> = 244	<i>n</i> = 1,069	<i>n</i> = 248	<i>n</i> = 47	<i>n</i> = 147
1 – <i>Not at all important</i>	4.5	1.4	3.7	5.1	4.4	2.1	4.8
2	4.9	7.1	4.1	4.9	6.5	4.3	4.1
3	17.0	21.4	18.4	15.0	26.2	19.1	12.2
4	19.2	25.7	17.2	18.6	21.0	17.0	20.4
5 – <i>Very important</i>	54.4	44.3	56.6	56.4	41.9	57.4	58.5
		Statistical significance: $\chi^2(20) = 36.6$, $p = .013$, Cramer's $V = .071$ <u>Conclusion</u> : There is adequate evidence from the data to say that the responses vary by facility type.					
(Question 28 continues on next page.)							

28. (cont'd) Rate the importance of each of the issues below in relation to the Individuals with Disabilities Education Act (IDEA).

Scale: 1 = *Not at all important* → 5 = *Very important*

Analyses limited to respondents who met the following criterion:

❖ CCC-SLP

Response	Facility Type						
	All Facility Types	Special Day/ Residential	Preschool	Elementary	Secondary	Admin. Office	Combina- tion
Treatment of ASD							
	<i>n</i> = 1,913	<i>n</i> = 70	<i>n</i> = 241	<i>n</i> = 1,055	<i>n</i> = 247	<i>n</i> = 49	<i>n</i> = 145
1 – <i>Not at all important</i>	0.8	0.0	0.0	1.1	0.4	4.1	0.7
2	2.6	1.4	2.9	2.7	1.6	2.0	2.8
3	13.2	5.7	13.3	14.3	10.9	12.2	13.1
4	28.0	25.7	24.9	28.0	27.9	30.6	27.6
5 – <i>Very important</i>	55.4	67.1	58.9	53.9	59.1	51.0	55.9
		Too many cells (27%) have an expected count of less than 5. <u>Conclusion:</u> Too little data are available in some facility categories to test whether responses vary by facility type.					

Note. ASD = autism spectrum disorder.



Student Loans

29. How much unpaid student debt do you have? Enter "0" if none.

Analyses limited to respondents who met the following criteria:

- ❖ CCC-SLP
- ❖ Student debt of at least \$1

Debt	Facility Type						
	All Facility Types (n = 595)	Special Day/ Residential (n = 31)	Preschool (n = 82)	Elementary (n = 352)	Secondary (n = 64)	Admin. Office (n = 5)	Combination (n = 38)
25th percentile	\$16,000	\$19,225	\$12,000	\$15,643	\$12,508	(n < 25)	\$19,465
50th percentile (Median)	\$30,000	\$29,616	\$30,000	\$32,000	\$28,000		\$42,000
75th percentile	\$60,000	\$76,399	\$52,770	\$64,468	\$50,000		\$69,630
Mean	\$42,934	\$50,870	\$39,065	\$43,902	\$35,030		\$43,593
Standard deviation	\$37,913	\$45,707	\$37,117	\$38,882	\$26,770		\$31,521
Mode	\$20,000	\$20,000	\$30,000	\$20,000	\$40,000		\$20,000
		Statistical significance: $F(5, 565) = 1.9, p = .085$ <u>Conclusion:</u> There is not enough evidence from the data to say that the responses vary by facility type.					

30. Are you aware of the federal program that offers \$17,500 in loan forgiveness for math, science, and special education teachers? (Percentages)

Analyses limited to respondents who met the following criterion:

❖ CCC-SLP

Aware	Facility Type						
	All Facility Types	Special Day/ Residential	Preschool	Elementary	Secondary	Admin. Office	Combina- tion
Includes Those With \$0 Student Debt							
	<i>n</i> = 1,196	<i>n</i> = 47	<i>n</i> = 170	<i>n</i> = 677	<i>n</i> = 146	<i>n</i> = 17	<i>n</i> = 80
Yes	46.2	42.6	40.6	49.3	44.5	(<i>n</i> < 25)	41.3
No (SKIP to Q. 33.)	53.8	57.4	59.4	50.7	55.5		58.8
	Statistical significance: $\chi^2(5) = 7.0, p = .221$ <u>Conclusion:</u> There is not enough evidence from the data to say that the responses vary by facility type.						
Excludes Those With \$0 Student Debt							
	<i>n</i> = 589	<i>n</i> = 31	<i>n</i> = 81	<i>n</i> = 348	<i>n</i> = 63	<i>n</i> = 5	<i>n</i> = 36
Yes	60.6	45.2	53.1	64.7	65.1	(<i>n</i> < 25)	52.8
No (SKIP to Q. 33.)	39.4	54.8	46.9	35.3	34.9		47.2
	Statistical significance: $\chi^2(5) = 8.8, p = .116$ <u>Conclusion:</u> There is not enough evidence from the data to say that the responses vary by facility type.						

ASHA 2018 SLP Schools Survey: Survey Summary Report

31. If YES, what endorsement, classification, or certification from your state department of education makes you eligible for the program? *Select all that apply.* (Percentages) Responses were in alphabetical order on survey instrument.

Analyses limited to respondents who met the following criteria:

- ❖ CCC-SLP
- ❖ Responded Yes to Q. 30 (aware of program)

Endorsement	Facility Type						
	All Facility Types (n = 552)	Special Day/ Residential (n ≥ 19)	Preschool (n ≥ 69)	Elementary (n ≥ 333)	Secondary (n ≥ 64)	Admin. Office (n = 10)	Combina- tion (n ≥ 33)
Speech-language pathologist	69.3	(n < 25)	64.3	70.7	73.8	(n < 25)	57.6
	Statistical significance: $\chi^2(5) = 7.2, p = .208$ <u>Conclusion:</u> There is not enough evidence from the data to say that the responses vary by facility type.						
Special education teacher	11.8	(n < 25)	7.2	11.4	13.8	(n < 25)	24.2
	Too many cells (25%) have an expected count of less than 5. <u>Conclusion:</u> Too little data are available in some facility categories to test whether responses vary by facility type.						
Special education with a speech-language endorsement	6.8	(n < 25)	10.1	6.9	6.3	(n < 25)	2.9
	Too many cells (42%) have an expected count of less than 5. <u>Conclusion:</u> Too little data are available in some facility categories to test whether responses vary by facility type.						
Speech-language teacher	4.7	(n < 25)	4.3	3.9	6.2	(n < 25)	6.1
	Too many cells (42%) have an expected count of less than 5. <u>Conclusion:</u> Too little data are available in some facility categories to test whether responses vary by facility type.						

(Question 31 continues on next page.)

ASHA 2018 SLP Schools Survey: Survey Summary Report

31. (cont'd) If YES, what endorsement, classification, or certification from your state department of education makes you eligible for the program? *Select all that apply.* (Percentages) Responses were in alphabetical order on survey instrument.

Analyses limited to respondents who met the following criteria:

- ❖ CCC-SLP
- ❖ Responded Yes to Q. 30 (aware of program)

Endorsement	Facility Type						
	All Facility Types (n = 552)	Special Day/ Residential (n ≥ 19)	Preschool (n ≥ 69)	Elementary (n ≥ 333)	Secondary (n ≥ 64)	Admin. Office (n = 10)	Combina- tion (n ≥ 33)
Audiologist	0.2	(n < 25)	0.0	0.3	0.0	(n < 25)	0.0
	Too many cells (50%) have an expected count of less than 5. <u>Conclusion:</u> Too little data are available in some facility categories to test whether responses vary by facility type.						
Other, specify:	4.1	(n < 25)	8.6	2.4	3.1	(n < 25)	11.8
	Too many cells (42%) have an expected count of less than 5. <u>Conclusion:</u> Too little data are available in some facility categories to test whether responses vary by facility type.						

32. Have you benefited from the federal program described in Q. 30? (Percentages)

Analyses limited to respondents who met the following criteria:

- ❖ CCC-SLP
- ❖ Regardless of current amount of student debt

Benefit	Facility Type						
	All Facility Types (n = 1,461)	Special Day/ Residential (n = 54)	Preschool (n = 178)	Elementary (n = 827)	Secondary (n = 184)	Admin. Office (n = 33)	Combina- tion (n = 108)
Yes	11.7	0.0	9.6	14.3	8.2	6.1	7.4
No	88.3	100.0	90.4	85.7	91.8	93.9	92.6
	Statistical significance: $\chi^2(5) = 18.6$, $p = .002$, Cramer's $V = .116$ <u>Conclusion:</u> There is adequate evidence from the data to say that the responses vary by facility type.						

Demographics

33. Which one of the following best describes where you work? (Percentages)

Analyses limited to respondents who met the following criteria:

- ❖ CCC-SLP
- ❖ Employed full time or part time

Area	Facility Type						
	All Facility Types (n = 2,072)	Special Day/ Residential (n = 84)	Preschool (n = 274)	Elementary (n = 1,183)	Secondary (n = 273)	Admin. Office (n = 48)	Combina- tion (n = 157)
City/urban area	32.0	33.3	28.5	31.4	31.1	39.6	39.5
Suburban area	46.2	58.3	51.8	45.0	52.4	45.8	32.5
Rural area	21.9	8.3	19.7	23.6	16.5	14.6	28.0
Not employed (SKIP to Q. 35.)	Removed from analyses						
	Statistical significance: $\chi^2(10) = 35.2$, $p = .000$, Cramer's $V = .093$ <u>Conclusion</u> : There is adequate evidence from the data to say that the responses vary by facility type.						



34. In what state is your primary employment FACILITY located? Use standard post office two-letter code (e.g., ID for Idaho).

Analyses limited to respondents who met the following criteria:

- ❖ CCC-SLP
- ❖ Employed full time or part time

State	<i>n</i>	State	<i>n</i>	State	<i>n</i>
Alabama (AL)	19	Kentucky (KY)	28	North Dakota (ND)	9
Alaska (AK)	4	Louisiana (LA)	30	Ohio (OH)	83
Arizona (AZ)	33	Maine (ME)	13	Oklahoma (OK)	27
Arkansas (AR)	39	Maryland (MD)	54	Oregon (OR)	28
California (CA)	182	Massachusetts (MA)	77	Pennsylvania (PA)	74
Colorado (CO)	34	Michigan (MI)	71	Rhode Island (RI)	8
Connecticut (CT)	33	Minnesota (MN)	49	South Carolina (SC)	28
Delaware (DE)	9	Mississippi (MS)	17	South Dakota (SD)	8
District of Columbia (DC)	3	Missouri (MO)	46	Tennessee (TN)	26
Florida (FL)	105	Montana (MT)	5	Texas (TX)	117
Georgia (GA)	50	Nebraska (NE)	18	Utah (UT)	17
Hawaii (HI)	6	Nevada (NV)	8	Vermont (VT)	8
Idaho (ID)	7	New Hampshire (NH)	11	Virginia (VA)	39
Illinois (IL)	117	New Jersey (NJ)	90	Washington (WA)	34
Indiana (IN)	33	New Mexico (NM)	19	West Virginia (WV)	15
Iowa (IA)	11	New York (NY)	234	Wisconsin (WI)	45
Kansas (KS)	22	North Carolina (NC)	56	Wyoming (WY)	7
				Total	2,108

(Question 34 continues on next page.)

34. (cont'd) In what state is your primary employment FACILITY located? Use standard post office two-letter code (e.g., ID for Idaho).

Analyses limited to respondents who met the following criteria:

- ❖ CCC-SLP
- ❖ Employed full time or part time

Region/Division	Facility Type						
	All Facility Types (n = 2,109)	Special Day/ Residential (n ≥ 83)	Preschool (n ≥ 279)	Elementary (n = 1,195)	Secondary (n = 278)	Admin. Office (n = 49)	Combina- tion (n ≥ 162)
Northeast	26.1	51.2	27.6	21.9	38.5	16.3	22.0
Middle Atlantic	18.8	41.0	21.4	15.7	25.9	8.2	15.4
New England	7.2	10.8	6.4	6.2	12.6	8.2	6.2
Midwest	24.3	14.3	28.3	25.1	21.2	14.3	24.4
East North Central	16.4	9.6	19.2	17.3	14.7	10.2	16.7
West North Central	7.9	4.8	8.9	7.8	6.5	4.1	8.0
South	31.4	26.2	21.1	34.5	24.5	63.3	32.3
East South Central	4.5	0.0	3.6	5.1	4.0	4.1	3.1
South Atlantic	16.7	19.3	8.9	18.6	12.2	40.8	16.0
West South Central	10.2	6.0	8.5	10.8	8.3	18.4	13.0
West	18.2	8.3	22.9	18.5	15.8	6.1	21.3
Mountain	6.5	1.2	8.2	6.4	5.0	0.0	11.7
Pacific	11.7	7.2	14.9	12.1	10.8	6.1	9.9
		Statistical significance: FOR 4 REGIONS: $\chi^2(15) = 104.0$, $p = .000$, Cramer's $V = .130$ FOR 9 DIVISIONS: $\chi^2(40) = 132.9$, $p = .000$, Cramer's $V = .114$					

35. Identify the degrees you have earned. *Count only actual degrees—not equivalencies or certificates—and do not include degrees expected but not yet conferred. Select all that apply.* (Percentages)

Analyses limited to respondents who met the following criterion:

❖ CCC-SLP

Degree	Facility Type						
	All Facility Types (n ≥ 2,167)	Special Day/ Residential (n = 84)	Preschool (n ≥ 279)	Elementary (n ≥ 1,195)	Secondary (n = 279)	Admin. Office (n = 49)	Combina- tion (n ≥ 163)
Master's	99.2	100.0	99.6	99.2	98.6	95.9	99.4
AuD	0.1	0.0	0.0	0.2	0.0	0.0	0.0
SLPD or CScD	0.4	0.0	0.7	0.3	0.0	0.0	0.6
PhD	0.9	0.0	0.7	0.8	1.4	2.0	1.2
Other doctorate	0.7	0.0	0.0	0.6	2.2	2.0	0.0
		Too many cells (42%—50%) have an expected count of less than 5. <u>Conclusion:</u> Too little data are available in some facility categories to test whether responses vary by facility type.					
Highest Degree							
Master's	97.9	100.0	98.6	98.2	96.8	95.9	98.1
Doctorate	2.1	0.0	1.4	1.8	3.2	4.1	1.9
		Too many cells (25%) have an expected count of less than 5. <u>Conclusion:</u> Too little data are available in some facility categories to test whether responses vary by facility type.					

Note. AuD = doctor of audiology. SLPD = doctor of speech-language pathology. CScD = doctor of communication science. PhD = doctor of philosophy.

36. How many years (a) have you been employed in the audiology or speech-language pathology profession, and (b) how many of those years were in schools? *Round to the nearest full year. Enter "0" if you have never been employed in the professions.*

Analyses limited to respondents who met the following criteria:

- ❖ CCC-SLP
- ❖ Response greater than 0

Years	Facility Type						
	All Facility Types	Special Day/ Residential	Preschool	Elementary	Secondary	Admin. Office	Combina- tion
(a) Total Years in the Professions							
	<i>n</i> = 2,100	<i>n</i> = 82	<i>n</i> = 271	<i>n</i> = 1,159	<i>n</i> = 275	<i>n</i> = 46	<i>n</i> = 157
25th percentile	8.0	7.1	9.0	8.0	8.0	15.0	10.0
50th percentile (Median)	16.0	15.0	16.0	15.0	17.0	22.0	17.5
75th percentile	25.0	30.0	26.6	23.0	26.0	28.0	27.5
Mean	17.5	18.7	17.7	16.6	18.1	21.8	19.3
Standard deviation	10.8	12.6	10.6	10.2	11.4	9.4	11.9
Mode	5.0	4.0	15.0	5.0	6.0	20.0	17.0
		Statistical significance: $F(5, 1984) = 4.6, p = .000$ <u>Conclusion:</u> There is adequate evidence from the data to say that the responses vary by facility type.					
(Question 36 continues on next page.)							

36. (cont'd) How many years (a) have you been employed in the audiology or speech-language pathology profession, and (b) how many of those years were in schools? *Round to the nearest full year. Enter "0" if you have never been employed in the professions.*

Analyses limited to respondents who met the following criteria:

- ❖ CCC-SLP
- ❖ Response greater than 0

Years	Facility Type						
	All Facility Types	Special Day/ Residential	Preschool	Elementary	Secondary	Admin. Office	Combina- tion
(b) Total Years in the Schools							
	<i>n</i> = 2,098	<i>n</i> = 82	<i>n</i> = 267	<i>n</i> = 1,156	<i>n</i> = 276	<i>n</i> = 48	<i>n</i> = 158
25th percentile	6.0	5.8	7.0	6.0	6.0	12.2	7.0
50th percentile (Median)	13.0	13.0	12.0	12.0	11.6	18.2	15.0
75th percentile	20.0	26.0	19.9	19.0	20.0	24.3	23.0
Mean	14.5	15.4	14.1	13.9	14.3	19.6	16.3
Standard deviation	9.8	11.3	9.5	9.2	9.9	8.6	11.0
Mode	5.0	5.0	12.0	5.0	6.0	15.0	4.0
	Statistical significance: $F(5, 1980) = 5.0, p = .000$ <u>Conclusion:</u> There is adequate evidence from the data to say that the responses vary by facility type.						

ASHA 2018 SLP Schools Survey: Survey Summary Report

37. In what year were you born? (Note: Data were converted to age.)

Analyses limited to respondents who met the following criterion:

❖ CCC-SLP

Age	Facility Type						
	All Facility Types (n = 2,170)	Special Day/ Residential (n = 84)	Preschool (n = 280)	Elementary (n = 1,196)	Secondary (n = 279)	Admin. Office (n = 49)	Combina- tion (n = 163)
25th percentile	34.0	33.0	35.0	34.0	35.0	42.0	36.0
50th percentile (Median)	43.0	42.7	44.0	42.0	45.0	48.9	45.0
75th percentile	54.0	57.8	53.0	53.0	55.8	58.0	57.0
Mean	44.3	44.6	44.5	43.3	45.3	49.7	45.9
Standard deviation	11.7	12.6	11.0	11.4	11.8	9.9	12.1
Mode	43.0	61.0	41.0	43.0	38.0	46.0	57.0
		Statistical significance: $F(5, 2044) = 5.1, p = .000$ <u>Conclusion:</u> There is adequate evidence from the data to say that the responses vary by facility type.					

38. Are you...(Percentages)

Analyses limited to respondents who met the following criterion:

❖ CCC-SLP

Sex	Facility Type						
	All Facility Types (n = 2,168)	Special Day/ Residential (n = 84)	Preschool (n = 280)	Elementary (n = 1,196)	Secondary (n = 279)	Admin. Office (n = 49)	Combina- tion (n = 164)
Female	98.2	98.8	98.9	98.7	97.1	98.0	95.7
Male	1.8	1.2	1.1	1.3	2.9	2.0	4.3
		Too many cells (42%) have an expected count of less than 5. <u>Conclusion:</u> Too little data are available in some facility categories to test whether responses vary by facility type.					

Appendix

Summary Report Statistics

Statistics used in this summary report include the following notations and descriptions:

Notation	Description
Response rate	<p>The percentage of individuals who were included in the sample, minus any who were ineligible</p> $RR = \frac{(C + P)}{S - (Ret + I)}$ <p>Where</p> <ul style="list-style-type: none"> RR = Response rate C = Number of completed surveys P = Number of partial surveys S = Sample size Ret = Ineligible because of retirement I = Ineligible for other reasons (e.g., does not work in schools, no longer in the field, on leave of absence) $RR = \frac{2170}{4504 - (9 + 45)} = 48.8\%$
<i>n</i>	The number in the sample. In this report, the number of people who answered a particular question.
Mean	<p>A measure of central tendency; an average. Add the total of all the values and divide by the number of items.</p> <p>Example: $(1 + 1 + 7 + 34 + 88) / 5 = 26.2$</p>
Standard deviation	<p>A statistic that shows the spread of scores in a distribution. Used with means. The larger the standard deviation, the more widely the scores are spread out around the mean.¹</p> <p>About 68% of the measurement is between 1 standard deviation greater than and 1 standard deviation smaller than the mean; 95% are plus/minus 2 standard deviations.</p> <p>Example: $(1 + 1 + 7 + 34 + 88)$ Standard deviation = 37.1</p> <p>Therefore, 68% of the responses are between -10.9 and 63.3</p>
Median	<p>A measure of central tendency. Arrange the values in order, from lowest to highest. Select the value in the middle position.</p> <p>Example: 1, 1, 7, 34, 88 Median = 7</p>
Appendix table continues on next page.	

Notation	Description
Mode	<p>A measure of central tendency; an average. The value that occurs more frequently than any other value.</p> <p>Example: 1, 1, 7, 34, 88 Mode = 1</p>
Statistical significance	<p>Describes whether a value is larger or smaller than would be expected by chance alone.</p> <p>Note that a large sample size can lead to results that are “statistically significant” even though the results themselves may not have substantive or practical significance. This is particularly true for chi-square (χ^2) tests.¹</p>
Chi-square (χ^2)	<p>A test used to assess the statistical significance of a finding where the variables being assessed are nominal (e.g., annual salary and hourly salary) or ordinal (e.g., excellent, good, fair, and poor). It measures whether there are statistically significant differences between the observed frequencies and the expected frequencies of two variables. The larger the observed frequency is in comparison with the expected frequency, the larger the χ^2 statistic and the more likely the difference is statistically significant. When the sample size is large, large χ^2 values (that is, ones that that are statistically significant) can be obtained even for weak associations.¹</p>
Cramer’s V	<p>A measure of the <u>strength</u> of the association, used with χ^2 statistics to identify the meaningfulness of a relationship. The χ^2 value may be large with a small probability ($p < .05$) of having occurred by chance. That is, it is “statistically significant at the .05 level.” Cramer’s V is a measure of how strong (practically important) the relationship is between the variables. The larger the Cramer’s V, the stronger the association.</p>
ANOVA (F)	<p>F is the statistic computed when conducting an analysis of variance (ANOVA). <i>Analysis of variance</i> measures the differences between means on two or more variables. It is used when independent variables are categorical and a dependent variable is continuous.¹</p>
p	<p>Probability. Found in expressions such as $p = .003$ meaning “The probability that this result could have been produced by chance is 1 in 3/1000ths. The smaller the number, the less likely that the result was due to chance. The p value is the actual probability associated with an obtained statistical result, such as χ^2 or F.¹</p>
df	<p>Degrees of freedom. The number of values that are free to vary when computing a statistic. Used in interpreting both a χ^2 and an F ratio. It is calculated in a cross-tabulation as $(R - 1) (C - 1)$ or (the number of rows minus 1) times (the number of columns minus 1). In a 3 x 4 table, df would be 6.</p>

¹ Vogt, W. P. (1993). *Dictionary of statistics and methodology*. Newbury Park, CA: Sage.